



Snapshot Overview

Privacy Management Reference Model and Methodology (PMRM)

John Sabo

Chair, PMRM TC

john.annapolis@comcast.net

What is the PMRM?

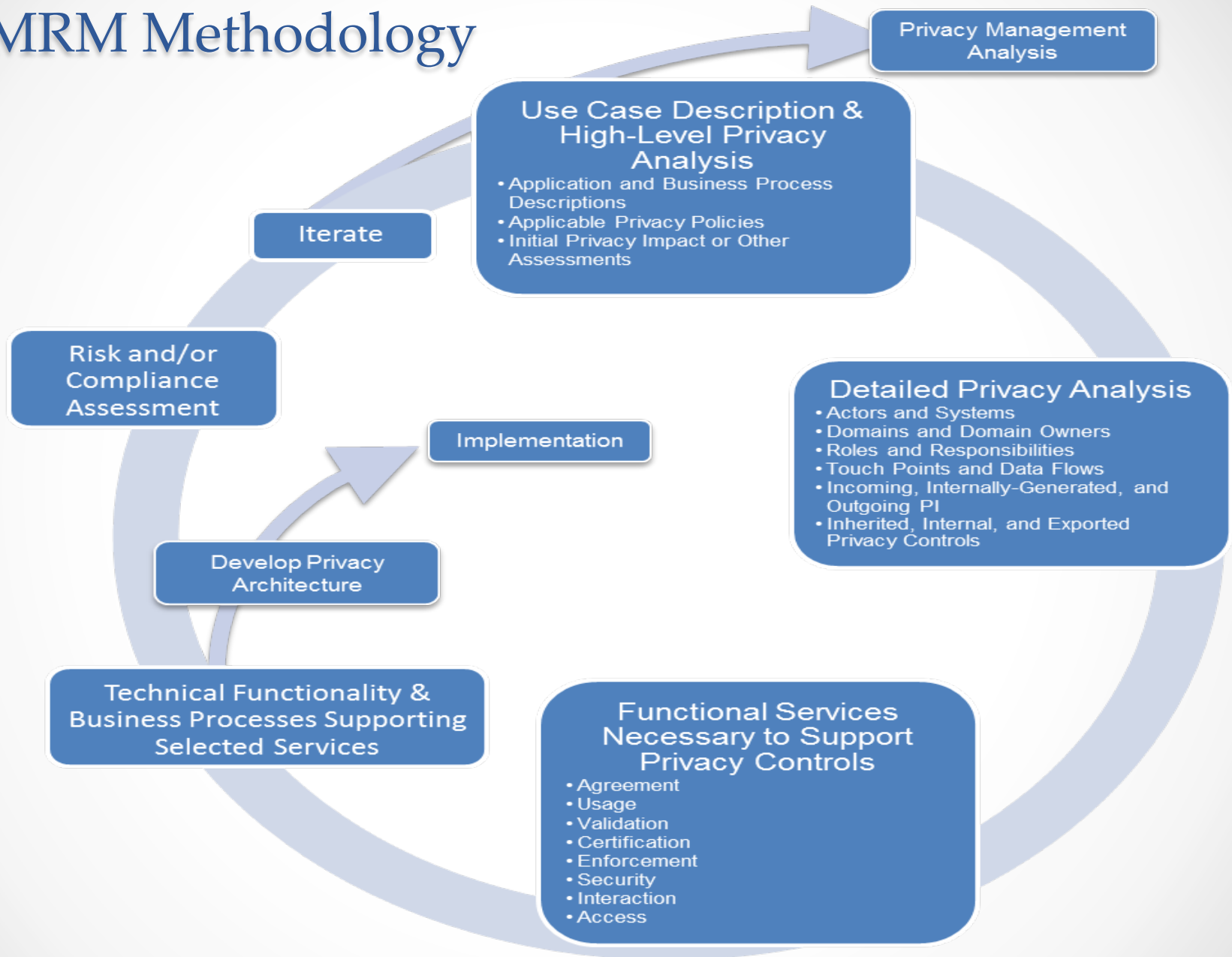
An analytic tool developed to:

- enable the structured analysis of “use cases” in which personal information (PI) is used, generated, communicated, processed and stored
 - Support for applications, IoT, Cloud, complex hyper-connected systems, as well as smaller components of a system
- show the linkages among data, data flows, PI, privacy [and security] policies, privacy controls, privacy-enabling Services/ functionality, and risk
- achieve privacy by design requirements and compliance across policy and system boundaries
- support multiple stakeholders

Why is the PMRM Important?

- **Makes possible a structured, privacy risk management analysis in networked, interoperable services, applications and devices across legal, regulatory and policy environments in multiple policy and system domains**
- **Serves as an “analytic boundary instrument” enabling all stakeholders to contribute to and understand the privacy implications of complex use cases - usable by program managers, privacy officers, business owners, IT architects and developers, etc.**
- **Exposes the components of privacy management in complex environments where risk analysis is often stove-piped and compromised, such as cloud computing, health IT, smart grid, social networking, federated identity, Internet of Everyone and Everything (IoT), etc.**
- **Valuable tool for Privacy by Design (PbD)**

PMRM Methodology



Thank You



John.annapolis@comcast.net

www.oasis-open.org

OASIS  **IDtrust**